

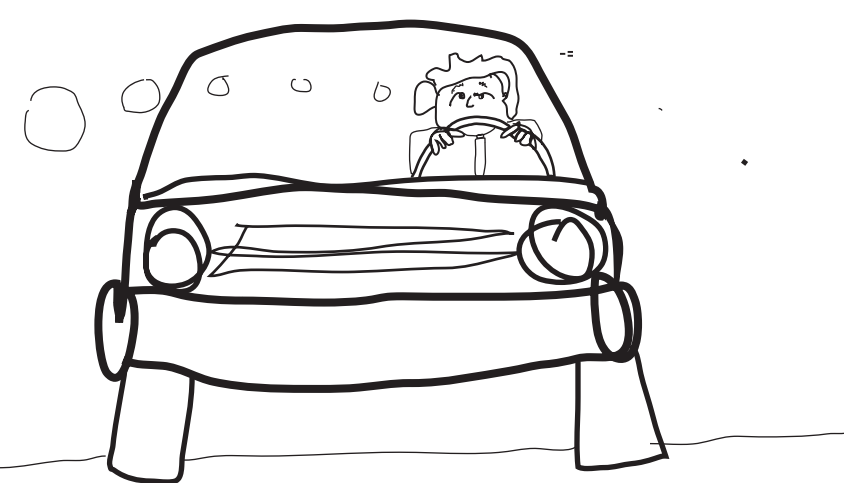
Fix the traffic at the station

It's not easy... It doesn't feel safe...It's definitely not fun.



The train station looks great now, so can we make it easier and safer to get there? The intersection of Depot Plaza and Main St. has an irregular layout and is confusing - for pedestrians and vehicles.

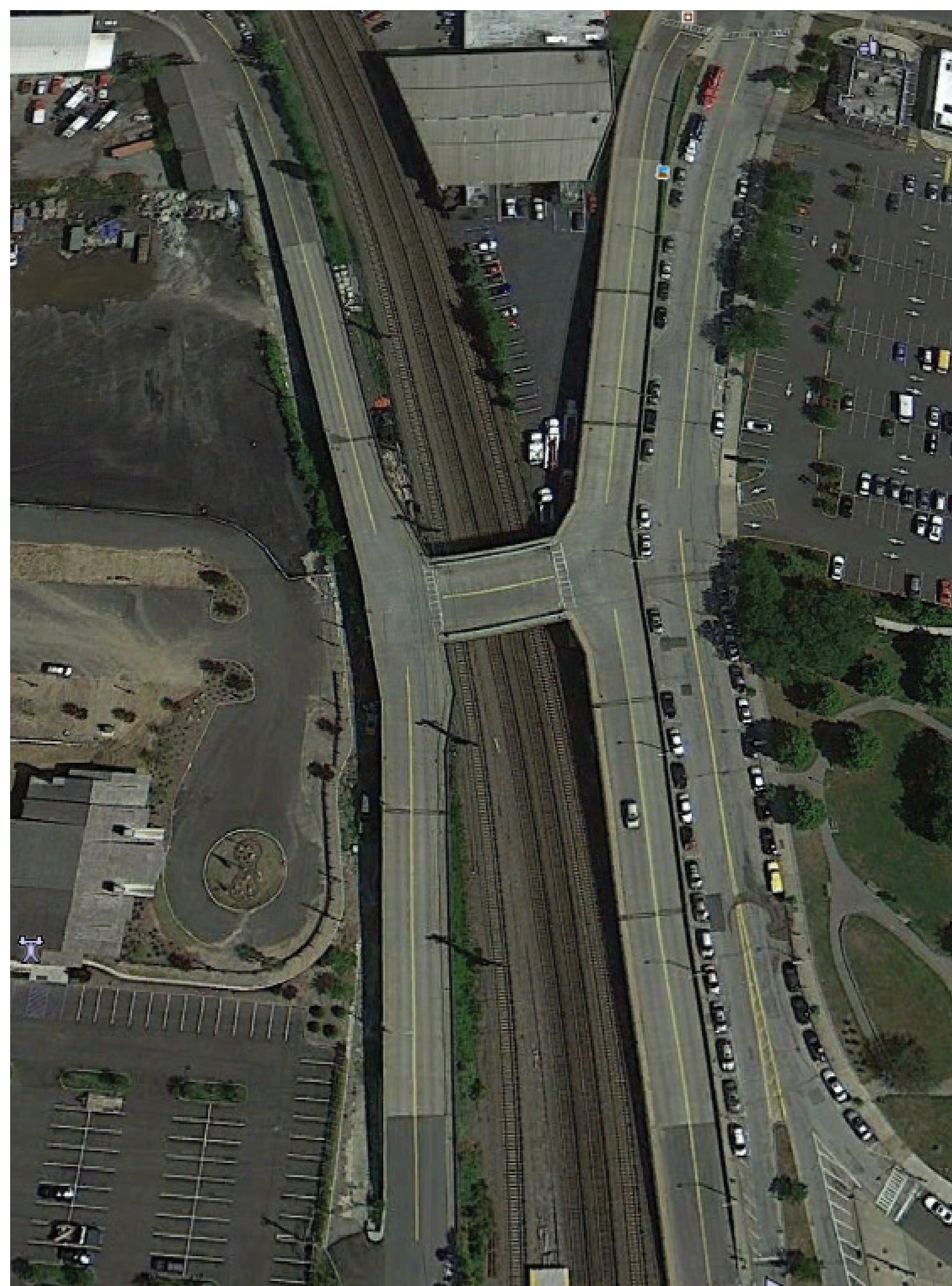
Who has the right of way?
Should I stay or should I go?
I hope that bus doesn't
sideswipe me.



Buses and shuttles and taxis and drop offs and bicycles and pedestrians all merge to the station in one lane. How can we make movement around the station simple, clean, safe and efficient?

What are some of the possibilities?

- dedicated traffic lanes that would separate buses from drop offs from shuttles and taxis
- places for pedestrians and bicycles to travel without dodging traffic
- well designed signage
- easy parking east of the train tracks, less traffic over the H bridge
- a roundabout at the Depot Plaza and Main St. intersection



What are your thoughts? Feel free to use the sticky pad to write a comment or idea. We'll read them all.

