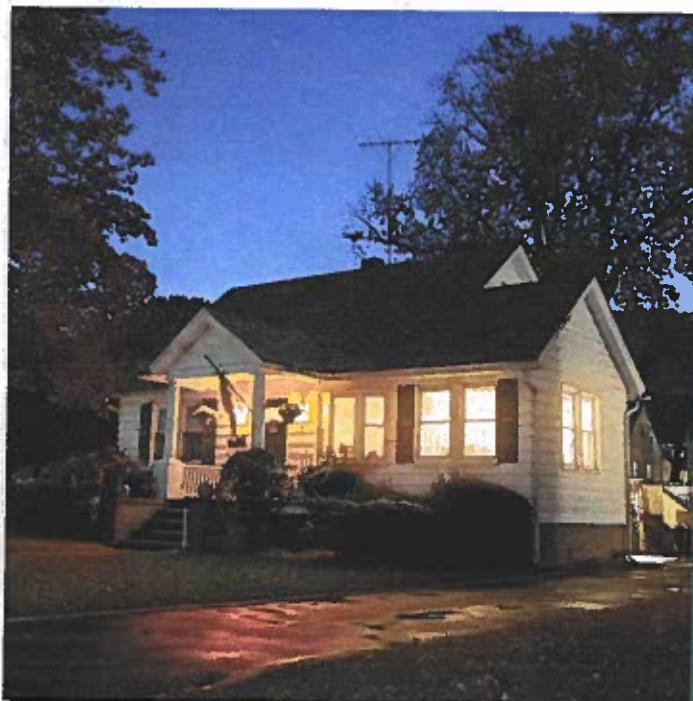




511 Theodore Fremd Avenue
Rye, NY 10580



We're Trimming and Clearing Trees To Keep Your Lights On

Overgrown trees and fallen limbs are the leading cause of power outages during storms.

In the coming weeks, Con Edison contractors will be in your neighborhood to assess and trim trees along our overhead lines. If trees or limbs on your property have grown near our lines, we need to trim or remove them. Tree trimming on private property is the responsibility of the property owner. Professional arborists who follow the International Society of Arboriculture pruning guidelines will do all the work at no expense to you. They make every effort to minimize the impact on appearance, health, and stress to trees.

Our arborists will let you know if you have a hazardous tree on your property. These dead, diseased, or dying trees are outside our right-of-way but could fall and cause an outage for you and your neighbors. We will never cut or remove a tree that is not in our right of way without your permission.

Learn more at conEd.com/treetrimming. If you have questions about the upcoming work in your neighborhood, email us at BWineclearance@conEd.com.

To help reduce outages caused by tree branches, we regularly prune trees growing within a specific distance of our distribution lines.

